

# Friends of Tokai Park Annual General Meeting

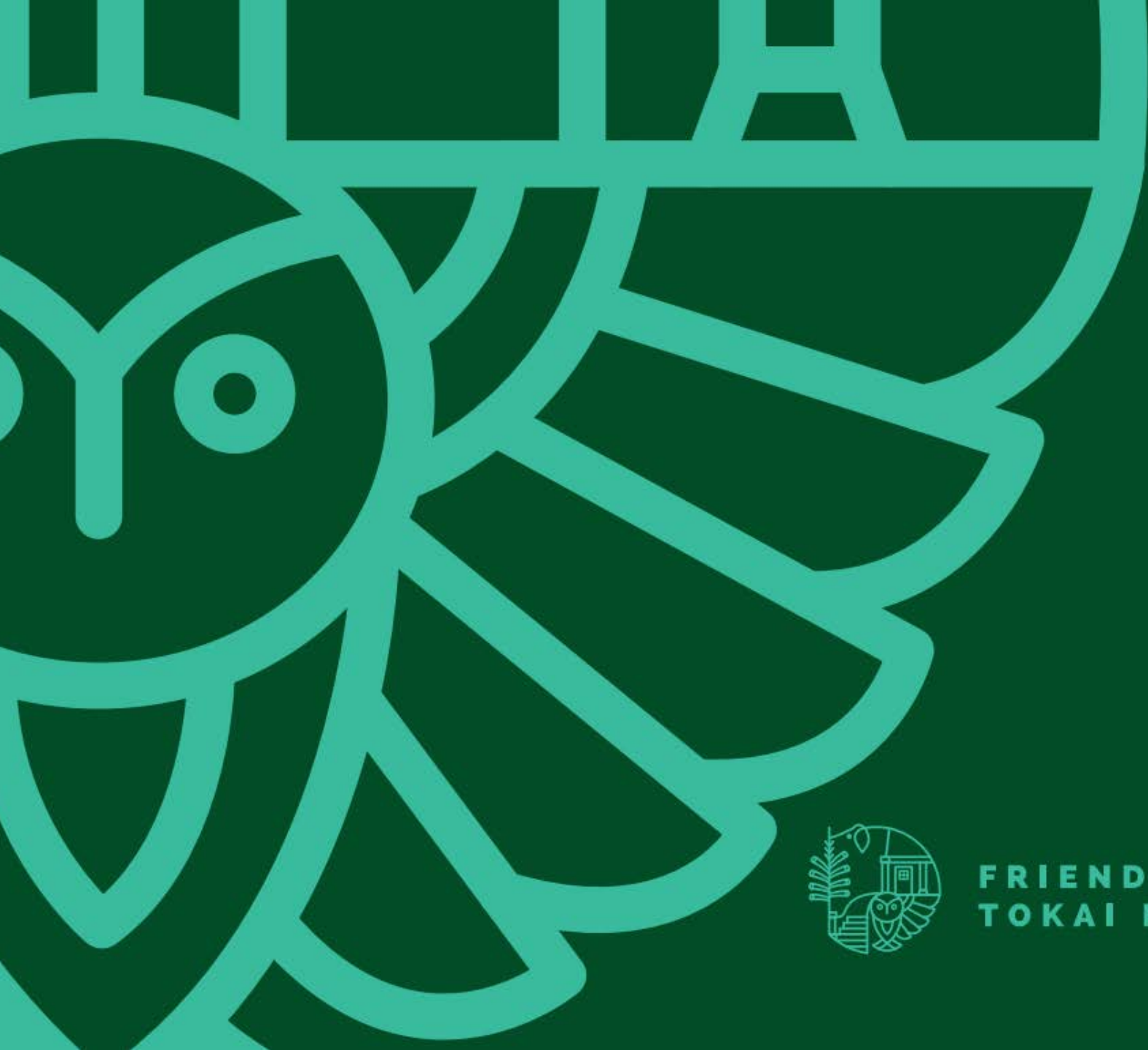
---

23 March 2023, Hybrid

- Cape Research Centre, Tokai
- Zoom



FRIENDS OF  
TOKAI PARK



# Friends of Tokai Park



FRIENDS OF  
TOKAI PARK

# Opening notes: Who are the FOTP?



**FRIENDS OF  
TOKAI PARK**



**FRIENDS OF  
TOKAI PARK**

## Our Vision

Biodiversity • Community • Heritage • Safety

Our goal is to conserve our natural plant and animal life at Tokai Park while promoting the park as a recreational gateway to our greatest natural asset and internationally-renowned World Heritage Site, Table Mountain National Park.



Whort Heath (*Erica verticillata*)

Driven to extinction in the wild by urbanisation, Whort Heath is a flagship species of biodiversity and Fynbos restoration and was rediscovered and reintroduced to Tokai and other parts of the Cape Peninsula. **Photo Di Turner.**



Elephant's Eye Cave

The elephantine southern flank of the historical Prinskasteel (now Constantiaberg), of which Elephant's Eye cave is a geological feature, watches over the Fynbos-bedecked eastern Cape Peninsula lowlands, an essential part of our heritage.



Tokai Farmhouse

Subsequently renamed Tokai Manor, the farmhouse at Tokai has seen centuries of African and European culture come and go, bequeathing us a legacy of Cape Dutch architecture, wine farming, slavery, afforestation and urbanisation. At the centre of our community, it attests – through oft-competing historical narratives – to a cultural brio informed as much by superstition and oversimplification as by our rich and varied history. **Photo Wikimedia**



Spotted Eagle Owl

A symbol of safety, combining alert watchfulness with an ability to survive in the wild and in human-dominated environments. **Photo Andre Marais**

# Agenda



**FRIENDS OF  
TOKAI PARK**

1. Welcome & housekeeping
2. Acceptance of previous AGM minutes
3. Chair's report
4. FOTP IUCN SOS Project report back
5. FOTP short film: draft presentation
6. Treasurer's report
7. Election of office bearers
8. Motions
9. Matters arising
10. Save the date: upcoming FOTP events
11. Close & thanks



**Please join us afterwards for wine & cheese!**

# FOTP AGM



FRIENDS OF  
TOKAI PARK

# 1. Welcome & Housekeeping



**FRIENDS OF  
TOKAI PARK**

## Welcome!

Anchor: Jeremy Gilmore, supporting online Alanna Rebelo

*Attendance:* Please fill out the register and write the full names of those participating in the chat so that we can have a full attendance list.

*Apologies:* Any apologies?

## Membership

Please join our mailing list if you haven't already!

## Hybrid meeting: Zoom etiquette

Please note this is a virtual meeting and there are people online

## Membership fees

We do not charge membership fees, so please do donate!

Donations welcome!



dYtyCY74

## 2. Acceptance of previous AGM minutes



**FRIENDS OF  
TOKAI PARK**

Any corrections/matters arising?

Accepted?

Proposer:

Secunder:

### 3. Chairperson's report



**FRIENDS OF  
TOKAI PARK**



Prof Tony Rebelo

Chairperson



### 3. Chairperson's report



**FRIENDS OF  
TOKAI PARK**

### Restoration burn



# 3. Chairperson's report



**FRIENDS OF  
TOKAI PARK**

## FOTP signboard refurbished!



# 3. Chairperson's report



**FRIENDS OF  
TOKAI PARK**

## City Nature Challenge 2023



**April 28 –  
May 1**

Taking pictures of wild  
plants and animals.

**May 2 –  
May 7**

Identifying what was found.

### 3. Chairperson's report



**FRIENDS OF  
TOKAI PARK**

### Chainsaw Crew



### 3. Chairperson's report



**FRIENDS OF  
TOKAI PARK**

### Tuesday Hacks, Saturday Hacks



# 3. Chairperson's report



**FRIENDS OF  
TOKAI PARK**

## Arboretum Hacks





# Tokai Arboretum

## About

Members 18

The Tokai Arboretum was the first large-scale silviculture experimental station in South Africa. Here we record the plants and animals present in the Arboretum. This is a Friends of Tokai Park Project

History here:  
<https://www.inaturalist.org/projects/tokai->

Read More >

Your Membership

Edit Project

Project Journal

Overview

1,326  
OBSERVATIONS

414  
SPECIES

266  
IDENTIFIERS

88  
OBSERVERS

Stats

### 3. Chairperson's report



**FRIENDS OF  
TOKAI PARK**

## History Research and Heritage Subcommittee





### 3. Chairperson's report



**FRIENDS OF  
TOKAI PARK**

### Restoration Committee



# 3. Chairperson's report



**FRIENDS OF  
TOKAI PARK**

## Walks and surveys







# Tokai Park Restoration Study

## About

Members 49

### Monitoring the Restoration at Tokai Park

Tokai Park is a small wing, about 600 ha, of the greater Table Mountain National Park. It is made up of two sections: upper and lower Tokai Park.

[Read More >](#)

[Your Membership](#)

[Edit Project](#)

[Project Journal](#)

Overview

**20,794**  
OBSERVATIONS

**1,144**  
SPECIES

**828**  
IDENTIFIERS

**259**  
OBSERVERS

[Stats](#)



# About

Members 14

## Monitoring the Restoration at Upper Tokai Park

Tokai Park is a small wing, about 600 ha, of the greater Table Mountain National Park. It is made up of two sections: upper and lower

[Read More >](#)

[Your Membership](#)

[Edit Project](#)

[Project Journal](#)

Overview

9,998  
OBSERVATIONS

1,123  
SPECIES

697  
IDENTIFIERS

283  
OBSERVERS

[Stats](#)

# 3. Chairperson's report



**FRIENDS OF  
TOKAI PARK**

## Special events

Spring Walk – October 2022



Night Walks



FynbosLIFE

# 3. Chairperson's report



FRIENDS OF  
TOKAI PARK

## Website



## Archived Performance Report for: <https://tokaipark.com/>

Share

Report generated: Sun, Mar 19, 2023 1:32 AM -0700 (monitored job)

[View latest report »](#)

Test Server Location: Vancouver, Canada

Using: Chrome (Desktop) 103.0.5060.134, Lighthouse 9.6.4

### GTmetrix Grade ?

A

Performance ?

92%

Structure ?

84%

### Web Vitals ?

Largest Contentful Paint ?

1.6s

Total Blocking Time ?

66ms

Cumulative Layout Shift ?

0.03

### 3. Chairperson's report: FOTP IUCN SOS

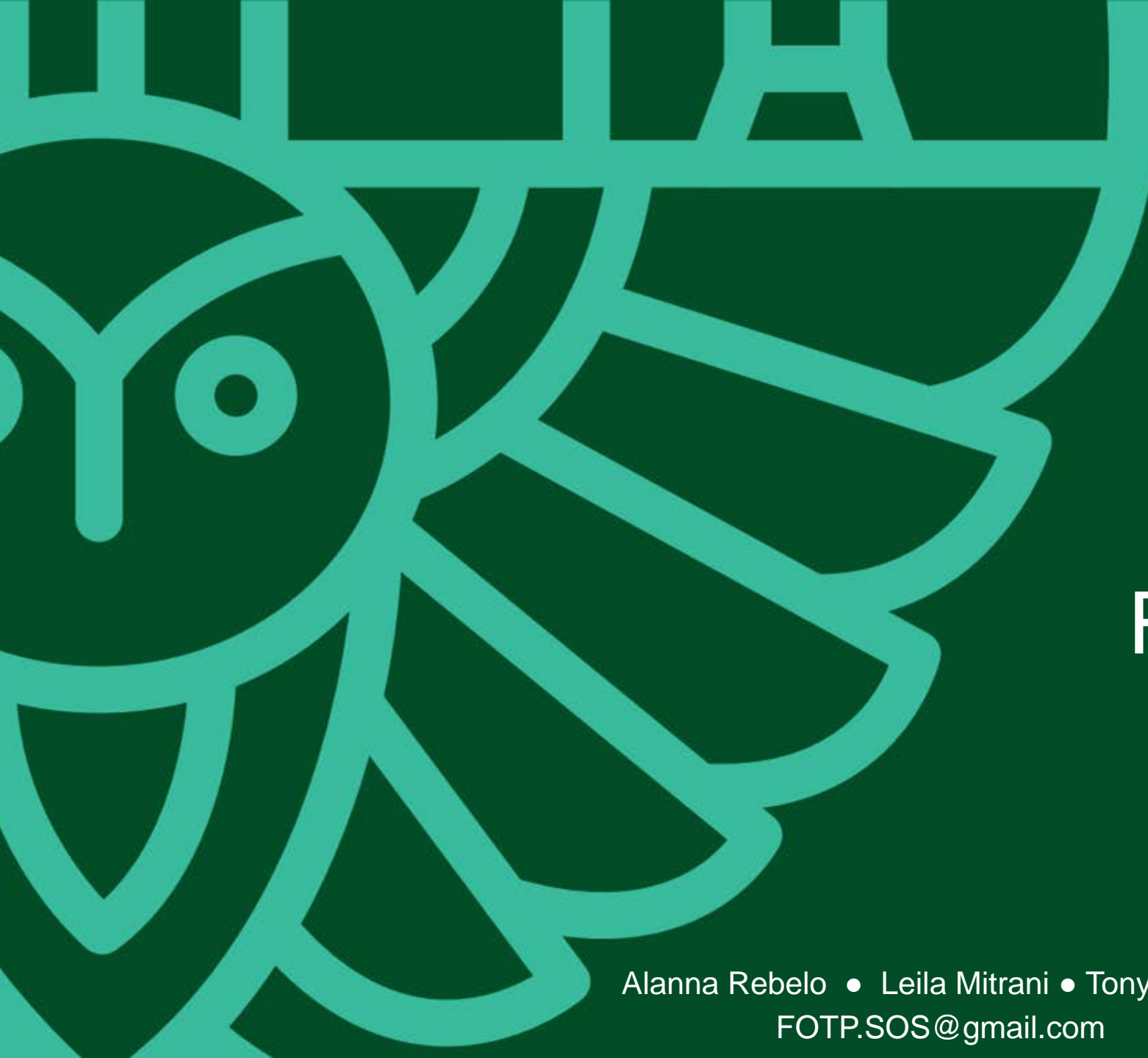


**FRIENDS OF  
TOKAI PARK**

A report back on our  
exciting FOTP IUCN  
SOS Project!







# IUCN SOS Rapid Action Project

## Restoring Western Leopard Toad Habitat at Tokai

Alanna Rebelo • Leila Mitrani • Tony Rebelo  
FOTP.SOS@gmail.com



**FRIENDS OF  
TOKAI PARK**

# Who are we?

## Project Team:

- FOTP Signatory and Chair: Prof Tony Rebelo
- FOTP Lead: Dr Alanna Rebelo
- Project Manager: Leila Mitrani

## Partners:

- SANParks



**FRIENDS OF  
TOKAI PARK**



# Project Aims

1. Conservation graduate intern capacity building and training
2. Alien tree clearing/follow-up
3. Active restoration (propagation & revegetation)

# Aim 1: Conservation graduate intern capacity building and training



# Training Workshop



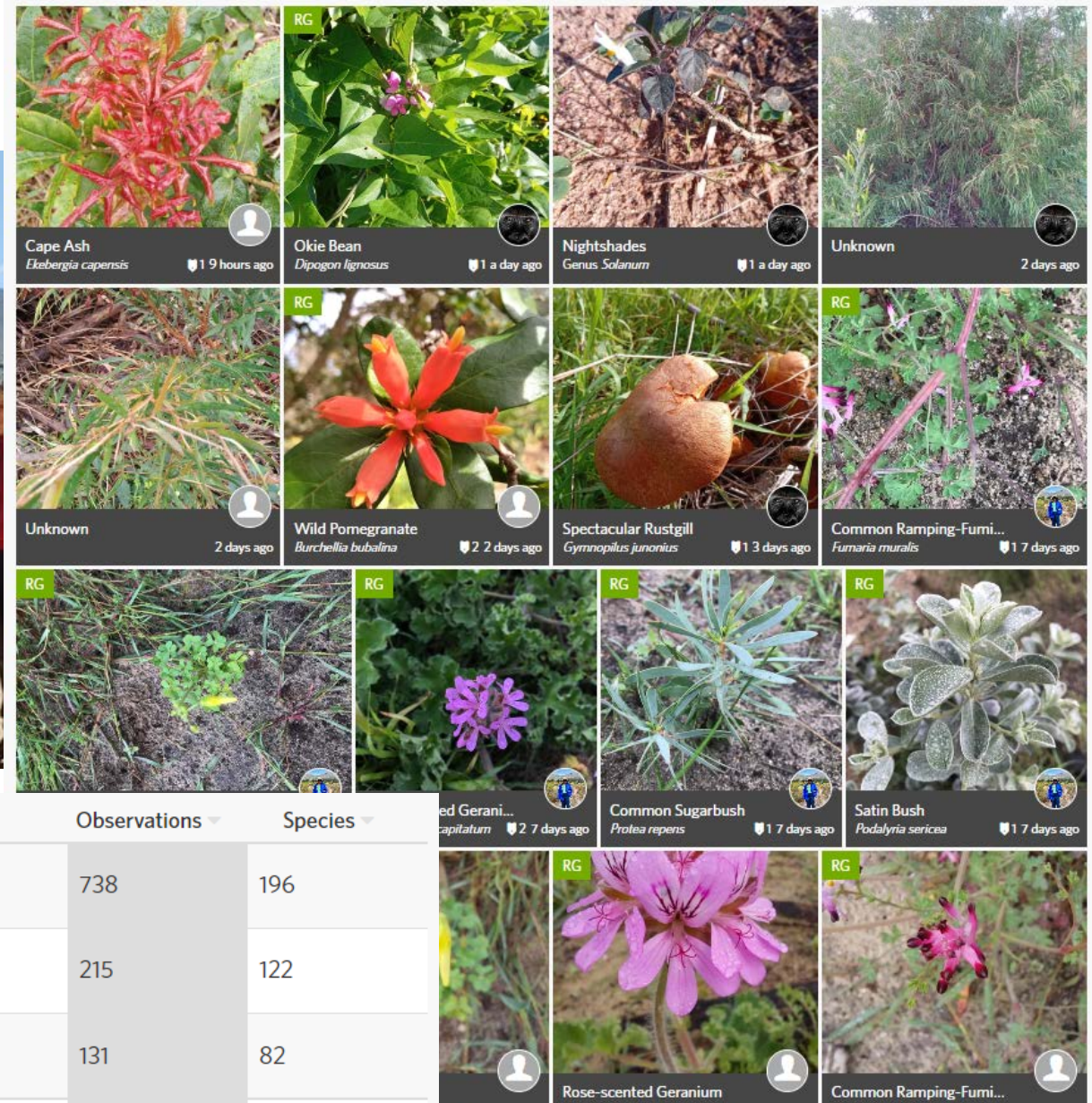
# Seed collecting trips & training



# Horticulture Workshops



# Contributing to iNaturalist collections



## Overview

- 1464 OBSERVATIONS
- 371 SPECIES
- 207 IDENTIFIERS
- 15 OBSERVERS

Rank	User	Observations	Species
1	tonyrebelo	738	196
2	bhekathina	215	122
3	luyanda2	131	82
4	dlaminiperfect	75	39



# Restoration burns



Friends of Tokai Park



Posted by Leila Mitrani

12 Apr · 🌐

And the burn has begun. Live post from the field!



Friends of Tokai Park



Posted by Jeremy Gilmore

18 Apr · 🌐

On 12 April 2022 a prescribed burn took place at Lower Tokai Park.

... See more



# Writing Workshops and Poster production



# Capacity Development Projects

1. Environmental Education
2. Conservation & Restoration Events Planning
3. Environmental Journalism
4. Poster Marketing



# Society for Ecological Restoration Make A Difference (MAD) week



**FRIENDS OF  
TOKAI PARK**



FRIENDS OF  
TOKAI PARK

# Restoration @ Tokai

## Be a Conservationist for a day

Friends of Tokai Park invite you to the Make A Difference Week Event at Prinskasteel Wetland, Lower Tokai. Come sponsor an indigenous plant and plant it. Help restore the wetland!

Join

\* Sign up using Google link provided.

\* Pre-purchase a plant online.

### Date and time

@9am - 11am  
11th June 2022

### Location

Lion's Gate, Lower  
Tokai Park

Contact Us



fotp.sos@gmail.com

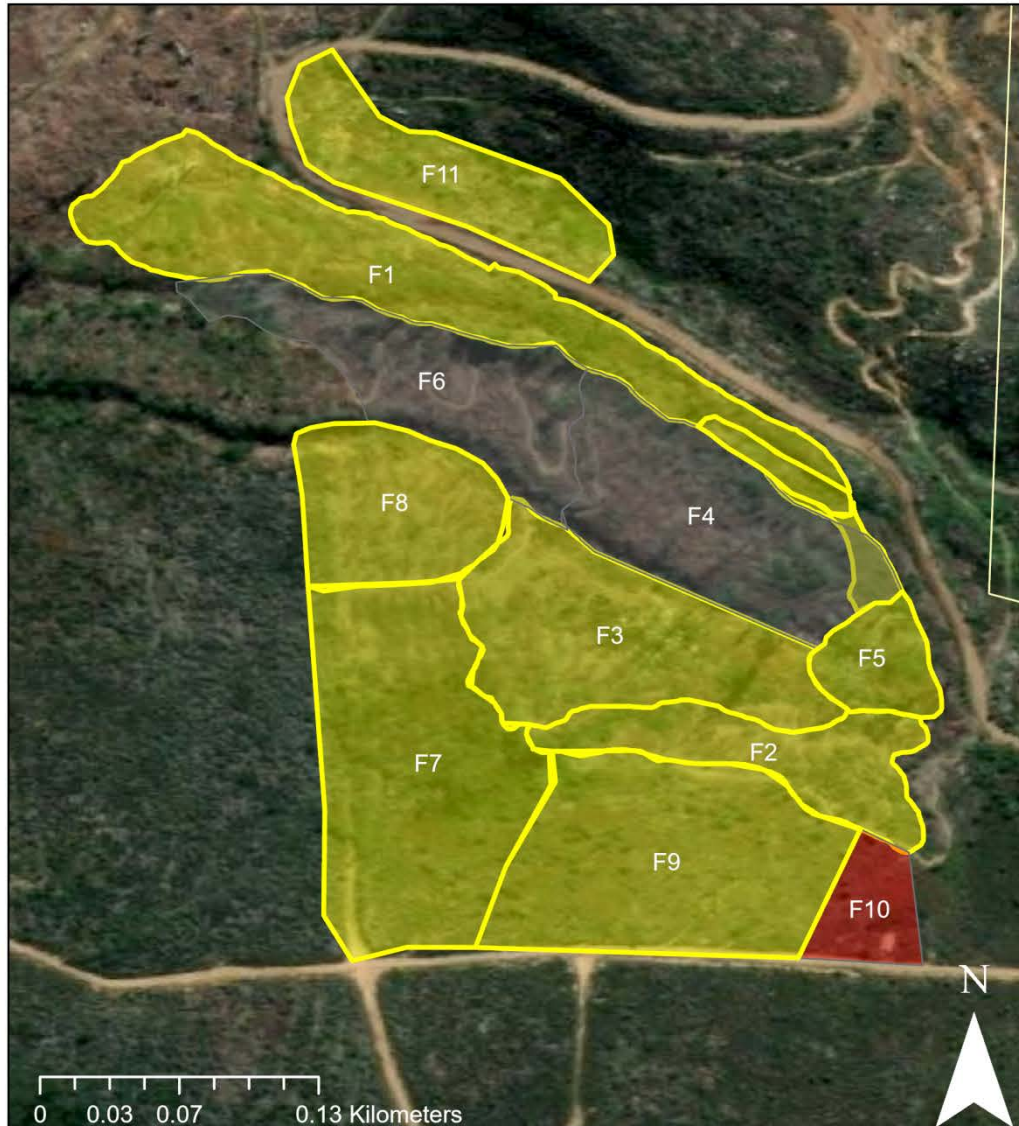


Friends of Tokai Park



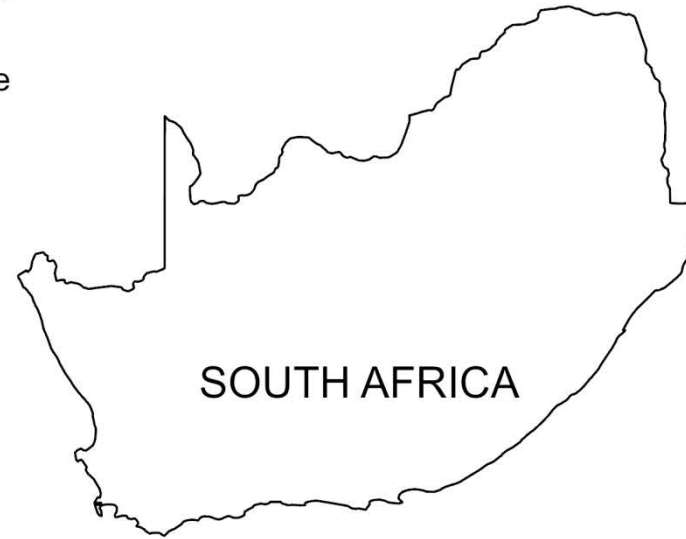
- The interns took the event from advertising and organising through to running the event itself
- A successful day of community planting!
- Excellent event planning and community conservation experience for the interns.

# Aim 1: Alien tree clearing



## Legend

- Tokai
- Complete
- No
- WfW
- Yes



description

Section\_G

FID 6

Name Section\_G

Veg\_Native% 47

Veg\_Alien% 30

Veg\_Graminoids% 7

Veg\_Ground% 3

Veg\_Litter% 14

Notes Section G (see map) is 1.17 ha and lies between the southern perimeter of Section F (northern perimeter), a bicycle path (eastern perimeter), an overgrown road (western perimeter) and another road (southern perimeter). Two streams intersect the section

Area (ha) 1.196047

Dates 16 to 20 May 2022

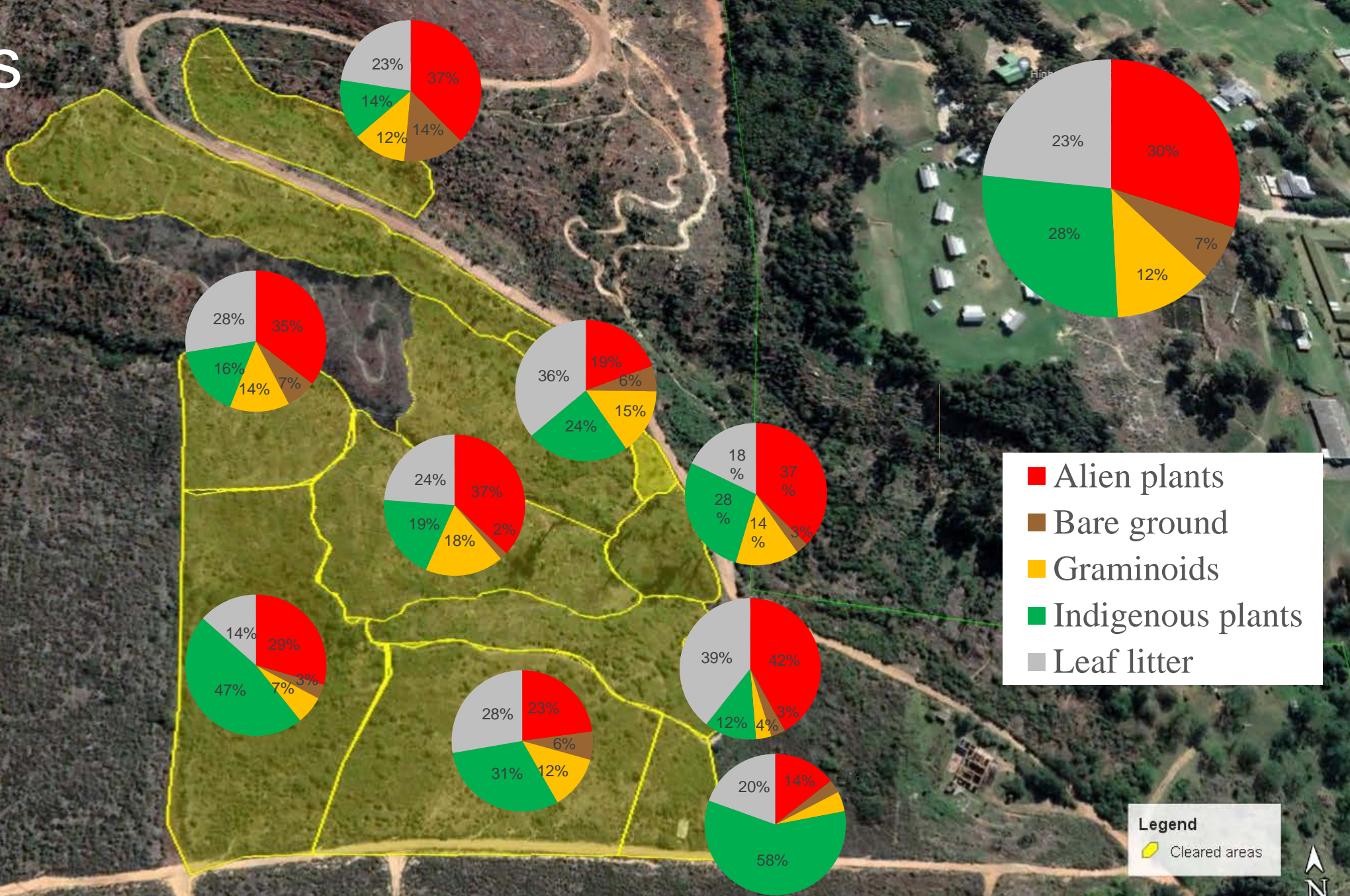
KeySpecies *Acacia longifolia*, *Acacia saligna*, *Acacia melanoxylon*, gums, pines  
iNat

<https://www.inaturalist.org/projects/tokai-park-iucn-sos-2022-interns?tab=stats>

Complete Yes

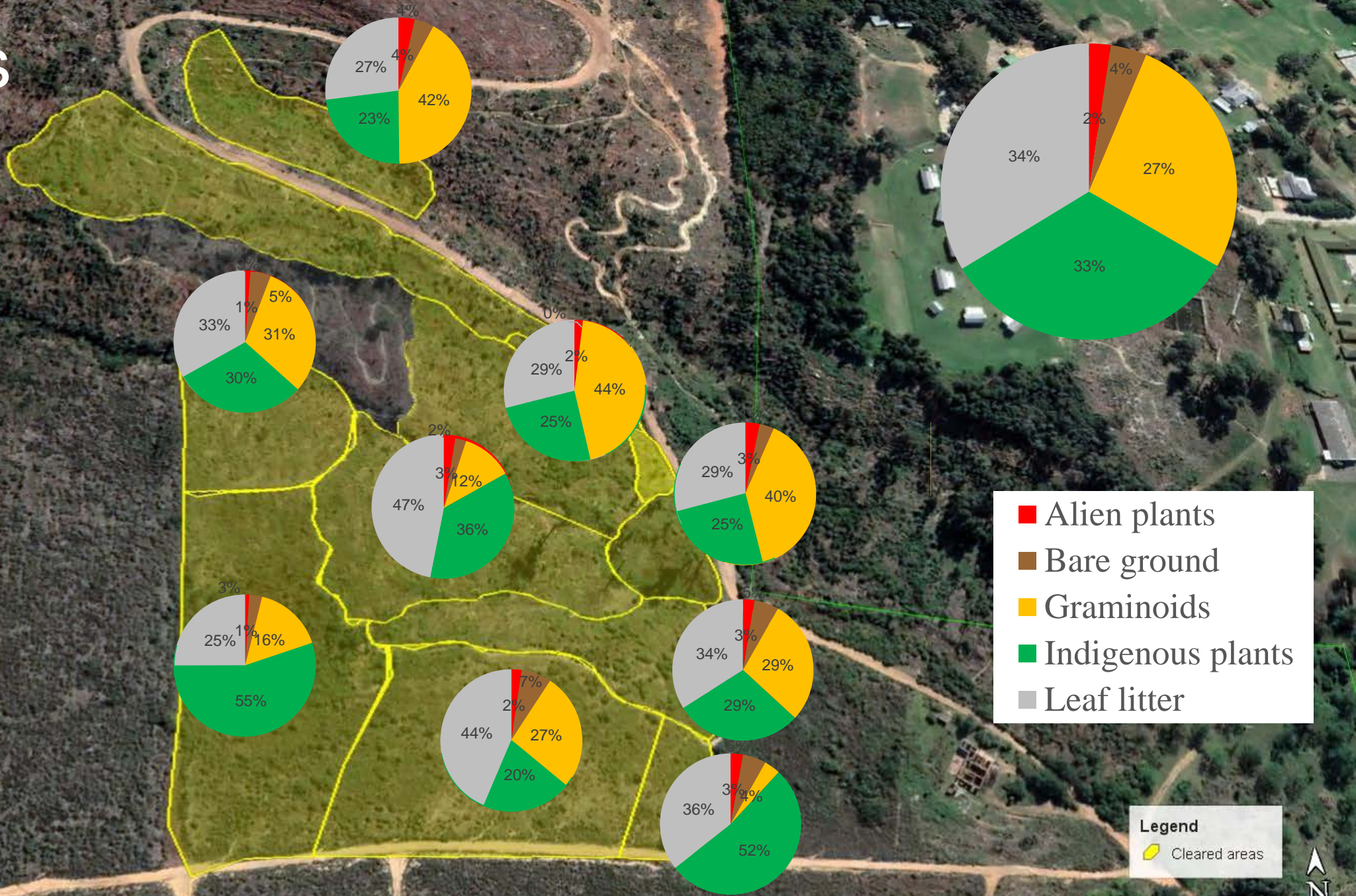


# Results





# Results





# Aim 2: Restoration planting

## Legend

-  Tokai
-  Complete
-  Excluded
-  No





Published in the Daily Maverick!

New population found!

ENDANGERED PLANTS

A new fountain bush population for Tokai Park



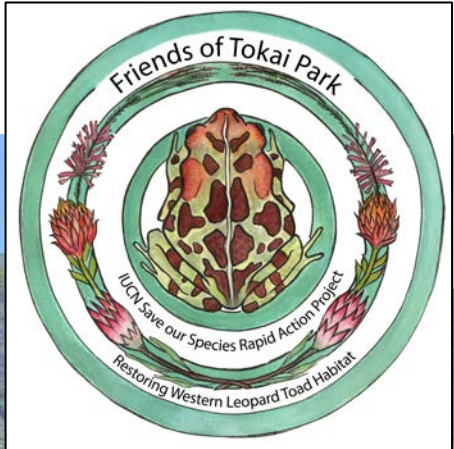
The Large-stipule Fountainbush (*Paoralea fascicularis*) is listed as endangered on the Red List of South African Plants.  
Image: Peter Swart / iNaturalist

By Zoë C Poulsen [Follow](#)

10 Oct 2022 0

Botanists working in the fynbos at Tokai Park have made the exciting discovery of a fountain bush population that has not been previously recorded at the site.

# Thank you team! Thank you partners! Thank you funders!



### 3. Chairperson's report: FOTP Film



**FRIENDS OF  
TOKAI PARK**

A sneak premier  
of a draft of  
FOTP's upcoming  
film!



### 3. Chairperson's report



**FRIENDS OF  
TOKAI PARK**

Any questions?

Accepted?

Proposer:

Secunder:

## 4. Treasurer's report



**FRIENDS OF  
TOKAI PARK**



Jay Cowen



# 4. Treasurer's report

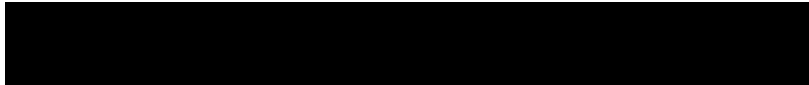


**FRIENDS OF  
TOKAI PARK**

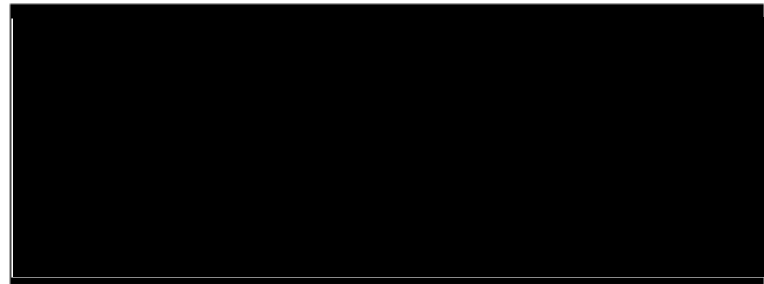
## **FRIENDS OF TOKAI PARK**

CASH FLOW FOR YEAR : 1st March 2022- - 28th February 2023

Funds brought forward from prior year end 28<sup>th</sup> Feb '22 :



### INCOME :



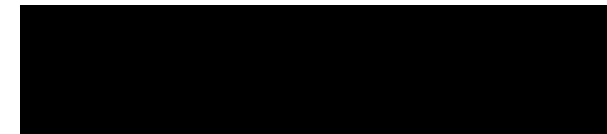
### EXPENDITURE:



CASH OUTFLOW FOR PERIOD =



FUNDS CARRIED FORWARD =



Thank you for those  
who generously  
donated to us in 2022!



## 4. Treasurer's report: IUCN SOS project



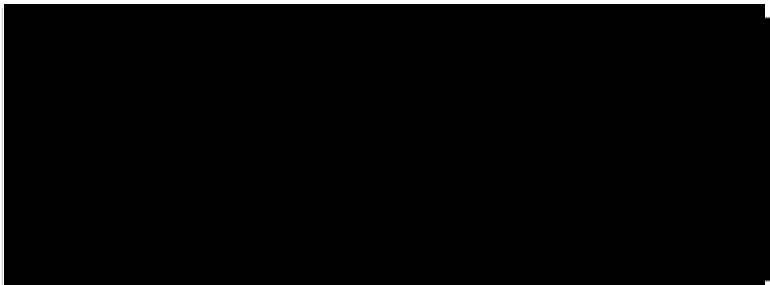
**FRIENDS OF  
TOKAI PARK**

### INCOME :



Overall categories of expenditure

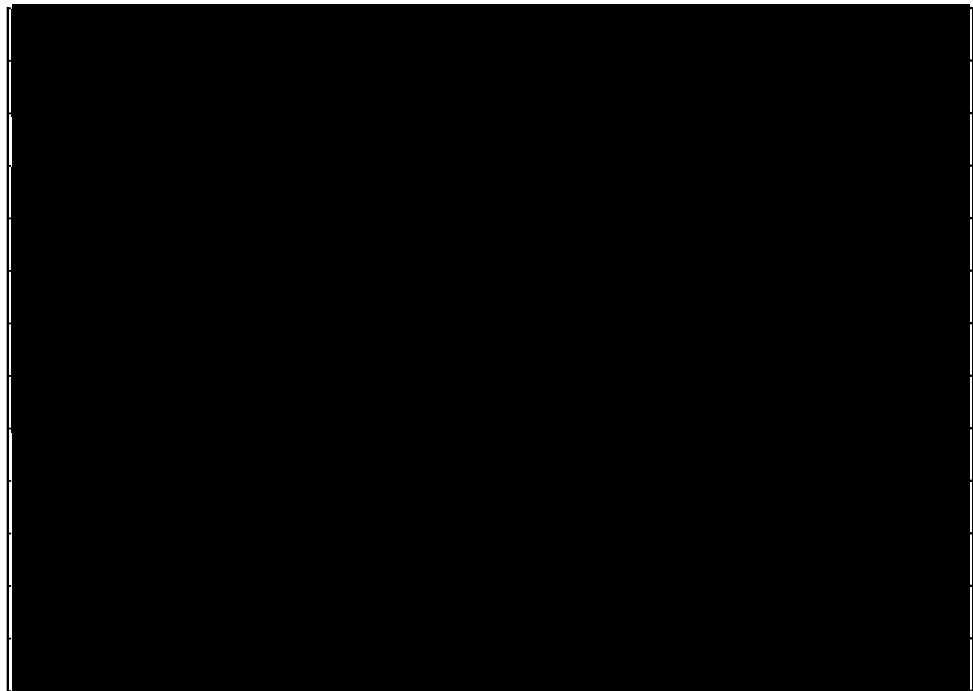
### EXPENDITURE:



CASH OUTFLOW FOR PERIOD =



FUNDS CARRIED FORWARD =



# 4. Treasurer's report: IUCN SOS project



**FRIENDS OF  
TOKAI PARK**

More detailed expenditure

64% of expenditure was ploughed into job creation for conservation graduates, a site manager and a project coordinator

Direct expenses	Category	R
Personnel Costs	Salaries	R
	Liability insurance	R
	Casual labour	R
	Admin Clerk	R
Subcontracting	Consultant ecologist	R
	Media Content creation	R
Travel	Fuel for local travel	R
Meetings and Workshops	Training workshop	R
	Workshops and Meetings	R
Project Supplies	Seedlings and seed	R
Project Equipment and Maintenance	Removal and planting tools	R
	PPE	R
	Paint brushes and mixing containers	R
	First Aid Kits	R
	Bakkie hire	R
	Water	R
Indirect costs	Trailer	R
	Bank charges	R
	Accountant	R
<b>Grand Total</b>		<b>R</b>

## 4. Treasurer's report



**FRIENDS OF  
TOKAI PARK**

Any questions?

Accepted?

Proposer:

Secunder:

# 5. Election of office bearers



**FRIENDS OF  
TOKAI PARK**

Current



## Our Team

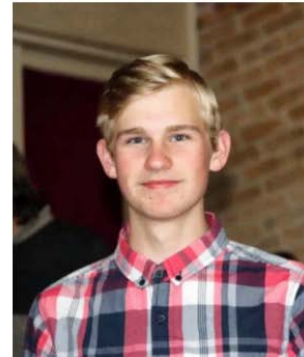
Meet our committee



Dr Tony Rebelo  
Chairperson



Dr Alanna Rebelo  
Secretary



Jeremy Gilmore  
Committee Member - Youth



Jay Cowen  
Treasurer



Mike Golby  
Committee Member



Vard Aman  
Committee Member

We are looking for more team members to join our committee! If you have a passion for lowland Fynbos conservation in general, and Tokai in particular, please contact us.

## 5. Election of office bearers



**FRIENDS OF  
TOKAI PARK**

### Outgoing



#### Dr Alanna Rebelo

##### Secretary

An ecohydrologist with a passion for conservation, Alanna is our Secretary and social media manager. She has always fought for those without a voice and, in Tokai, this means our critically endangered Cape Flats Sand Fynbos, Peninsula Granite Fynbos and its their myriad species.

Alanna is a **postdoctoral researcher at Stellenbosch University** and is currently working on a large research project entitled: the socio-economic benefits of investing in ecological infrastructure.

Cooking, hiking, and teaching maths, painting and piano are Alanna's passions during what little free time she has after attending to the many demands made on her by both her beloved Fynbos and the FoTP committee. You can follow Alanna on **ResearchGate**.

## 5. Election of office bearers



**FRIENDS OF  
TOKAI PARK**

### Incoming

Leila Mitrani official returns to the committee after her role as project coordinator (member of staff) on the FOTP IUCN project came to an end.



#### Leila Mitrani

##### Committee Member

Leila was born and raised in Cape Town, has a Masters in Botany from UCT, spent three years in public health research and currently works in property management and GIS consulting.

She is a Tokai resident who believes in looking after what's on our doorstep and is passionate about ecosystem restoration and urban conservation. She remembers visiting Tokai as a child and, all of 10 years ago, monitoring biocontrol as a SANBI intern.

Leila is often found running the perimeter of Lower Tokai with her dogs or pulling up pesky golden wattles. Being an amateur photographer armed with only a phone camera does not stop her from getting her knees dirty to photograph a flower from the right angle.

## 6. Matters Arising



**FRIENDS OF  
TOKAI PARK**

Are there any matters that participants would like to raise?



## 7. Motions



**FRIENDS OF  
TOKAI PARK**

There were no motions put forward for consideration.

## 8. Save the date: upcoming FOTP events



**FRIENDS OF  
TOKAI PARK**

### We have some exciting upcoming events:

1. Hacks (Lower Tokai Park - every Tuesday)
2. City Nature Challenge 2023 (28 April to 1 May)
3. Night Walk (28 April 2023)
4. Psoralea Planting Event (~June 2023)
5. Manitoka Hedge Restoration Planting Event (~October 2023)

Keep an eye on our website and socials!

< > This Month 2023.03.01 ▾ 

MON	TUE	WED	THU	FRI	SAT	SUN
<b>27</b> 08:30 - 12:00 Arboretum Group	<b>28</b> 16:00 - 18:00 Lower Tokai Tuesday Alien Hack	<b>1</b>	<b>2</b>	<b>3</b> 08:30 - 12:00 Arboretum Group	<b>4</b>	<b>5</b>
<b>6</b> 08:30 - 12:00 Arboretum Group	<b>7</b> 16:00 - 18:00 Lower Tokai Tuesday Alien Hack	<b>8</b>	<b>9</b>	<b>10</b> 08:30 - 12:00 Arboretum Group	<b>11</b>	<b>12</b>
<b>13</b> 08:30 - 12:00 Arboretum Group	<b>14</b> 16:00 - 18:00 Lower Tokai Tuesday Alien Hack	<b>15</b>	<b>16</b>	<b>17</b> 08:30 - 12:00 Arboretum Group	<b>18</b>	<b>19</b>
<b>20</b> 08:30 - 12:00 Arboretum Group	<b>21</b> 16:00 - 18:00 Lower Tokai Tuesday Alien Hack	<b>22</b>	<b>23</b>  19:30 - 21:30 Annual General Meeting	<b>24</b> 08:30 - 12:00 Arboretum Group	<b>25</b>	<b>26</b>
<b>27</b> 08:30 - 12:00 Arboretum Group	<b>28</b> 16:00 - 18:00 Lower Tokai Tuesday Alien Hack	<b>29</b>	<b>30</b>	<b>31</b> 08:30 - 12:00 Arboretum Group	<b>1</b>	<b>2</b>

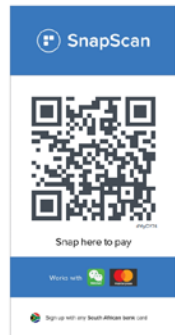


# 9. Closing: Donations



**FRIENDS OF  
TOKAI PARK**

Do you like what you see?



## BANK DETAILS

Friends of Tokai Park  
Standard Bank  
Blue Route  
Savings Account  
27 629 2669

WESSA Affiliation: MB1240127  
PBO Tax Exemption #: 930066728



Donate to our conservation efforts with one snap!



dYtyCY74



PBO Exemption Reference Number: 930066728

## 9. Closing: Support us



**FRIENDS OF  
TOKAI PARK**

Please visit our sales table after the meeting to buy t-shirts, licence disc stickers, a selection of indigenous trees and some hacking/gardening tools



Cape Beech



Coral Tree



Real Yellowwood



—

# Thank you!

You are now invited  
to join us for some  
cheese and wine 😊

---



FRIENDS OF  
TOKAI PARK