

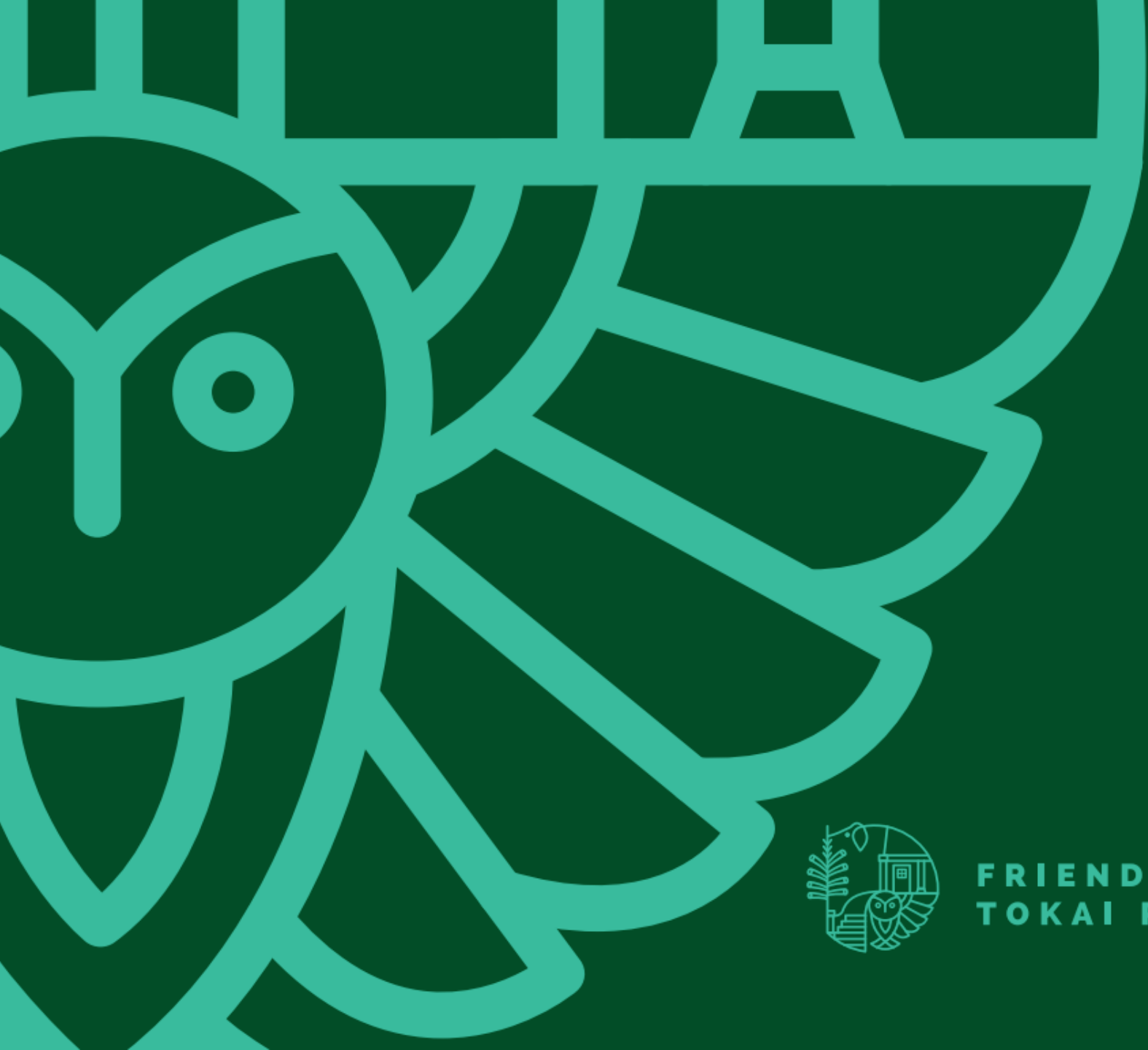
# Friends of Tokai Park Annual General Meeting

---

31 March 2022, Zoom



FRIENDS OF  
TOKAI PARK



# Friends of Tokai Park



FRIENDS OF  
TOKAI PARK

# Opening notes: Who are the FOTP?



**FRIENDS OF  
TOKAI PARK**



**FRIENDS OF  
TOKAI PARK**

## Our Vision

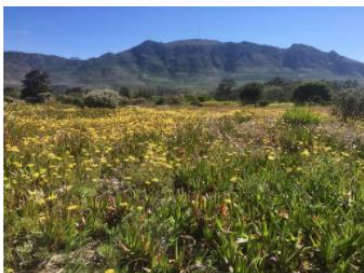
Biodiversity • Community • Heritage • Safety

Our goal is to conserve our natural plant and animal life at Tokai Park while promoting the park as a recreational gateway to our greatest natural asset and internationally-renowned World Heritage Site, Table Mountain National Park.



Whorl Heath (*Erica verticillata*)

Driven to extinction in the wild by urbanisation, Whorl Heath is a flagship species of biodiversity and Fynbos restoration and was rediscovered and reintroduced to Tokai and other parts of the Cape Peninsula. **Photo Di Turner.**



Elephant's Eye Cave

The elephantine southern flank of the historical Prinskasteel (now Constantiaberg), of which Elephant's Eye cave is a geological feature, watches over the Fynbos-bedecked eastern Cape Peninsula lowlands, an essential part of our heritage.



Tokai Farmhouse

Subsequently renamed Tokai Manor, the farmhouse at Tokai has seen centuries of African and European culture come and go, bequeathing us a legacy of Cape Dutch architecture, wine farming, slavery, afforestation and urbanisation. At the centre of our community, it attests – through oft-competing historical narratives – to a cultural brio informed as much by superstition and oversimplification as by our rich and varied history. **Photo Wikimedia**



Spotted Eagle Owl

A symbol of safety, combining alert watchfulness with an ability to survive in the wild and in human-dominated environments. **Photo Andre Marais**

# Opening notes: 2022 and the UN Decade on Ecological Restoration



**FRIENDS OF  
TOKAI PARK**



UNITED NATIONS DECADE ON  
**ECOSYSTEM  
RESTORATION**  
2021-2030

**UN**  
environment  
programme



Food and Agriculture  
Organization of the  
United Nations

EN



**Preventing, halting and reversing the degradation of ecosystems worldwide.**

[Get involved](#)

# Agenda



**FRIENDS OF  
TOKAI PARK**

## Part 1

1. Welcome & housekeeping
2. Previous AGM minutes
3. Chairperson's report
4. FOTP IUCN SOS Project
5. Treasurer's report
6. Election of office bearers
7. Matters arising
8. Save the date: upcoming FOTP events

## Part 2

9. Guest Talk: **Dr Anandi Bierman - PSHB**
10. Close & Thanks

## FOTP AGM 2022



Credit: Govork Ankelan



**Dr Anandi Bierman will present on the polyphagous shot hole borer.** Image [credit](#).



# Part 1: AGM

---



FRIENDS OF  
TOKAI PARK

# 1. Welcome & Housekeeping



**FRIENDS OF  
TOKAI PARK**

## Welcome!

*Attendance:* Please write the full names of those participating in the chat so that we can have a full attendance list.

*Apologies:* Any apologies?

## Membership

Mailing list

## Zoom etiquette

Please note we are recording this AGM.

Donations welcome!



dYlyCY74

Enter Full Screen

Participants (1)

Alanna Rebelo (Me)

Mute/Unmute

Chat

Raise Hand



Alanna Rebelo



Leave

Invite

Mute N

Raise Hand  
Claim host



## 2. Acceptance of previous AGM minutes



**FRIENDS OF  
TOKAI PARK**

Any corrections/matters arising?

Accepted?

Proposer:

Secunder:

### 3. Chairperson's report



**FRIENDS OF  
TOKAI PARK**



Prof Tony Rebelo

Chairperson

# 3. Chairperson's report



**FRIENDS OF  
TOKAI PARK**



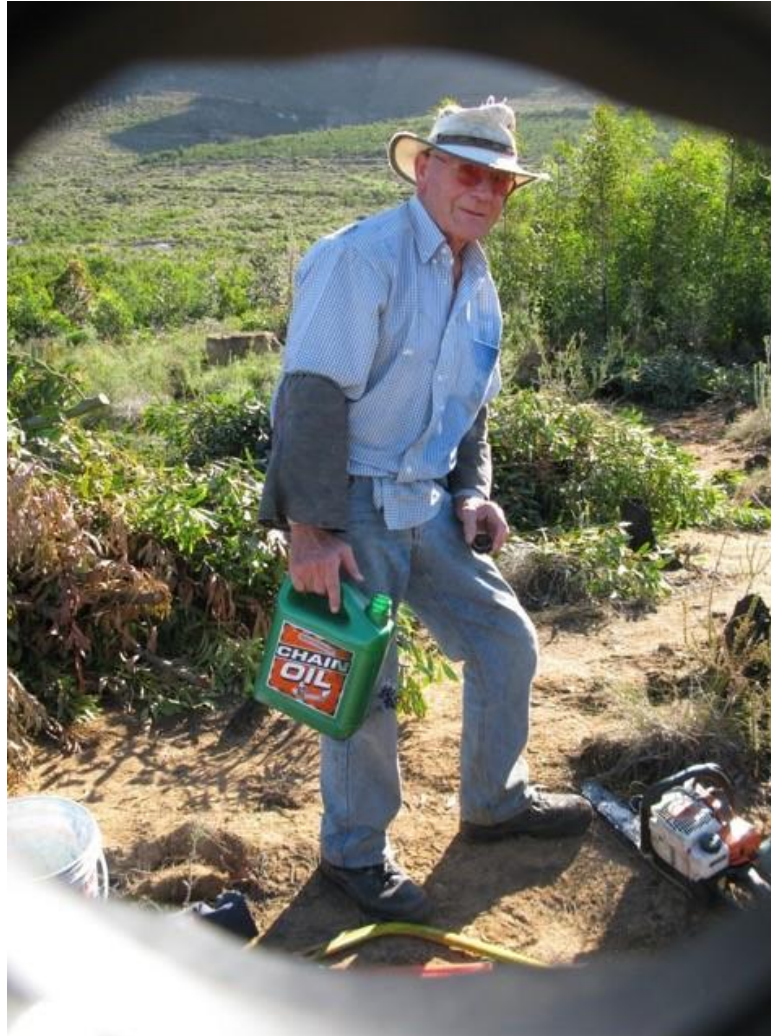
City Nature Challenge 2022: City of Cape Town  
APR 29, 2022 - MAY 2, 2022

### 3. Chairperson's report



**FRIENDS OF  
TOKAI PARK**

### Chainsaw Crew



### 3. Chairperson's report



**FRIENDS OF  
TOKAI PARK**

### Tuesday Hacks, Saturday Hacks



# 3. Chairperson's report



**FRIENDS OF  
TOKAI PARK**

## Arboretum Hacks



### 3. Chairperson's report



**FRIENDS OF  
TOKAI PARK**

## History Research and Heritage Subcommittee



### 3. Chairperson's report



**FRIENDS OF  
TOKAI PARK**

### Restoration Committee





### 3. Chairperson's report



**FRIENDS OF  
TOKAI PARK**

### Funding



# 3. Chairperson's report



**FRIENDS OF  
TOKAI PARK**

## Special events

Mushroom Walk – 22 May 2021



Spring Walk – 9 October 2021



Night Walks – 8 April 2021, 1 May 2021, 17 March 2022



FynbosLIFE

# 3. Chairperson's report



**FRIENDS OF  
TOKAI PARK**

## Website



[About Us](#) ▾ [Events](#) [Media](#) ▾ [News](#) [Tokai Park](#) ▾ [Contact](#) 🔍



## Our Team

—  
[Meet our committee](#)

# 3. Chairperson's report



**FRIENDS OF  
TOKAI PARK**

## Outreach

Table Mountain National Park

Explore The Park ▾ Where To Stay ▾ What To Do ▾ Rates & Fees ▾ How To Get There ▾ C

### Park Planning

- Tokai Cecilia Management Framework review - 2021
  - Phase 2 Report: Summary of Stakeholder Working Groups Proposals Received
  - Phase 2 Report: Stakeholder Working Groups Proposals Received
  - Meeting Recording - 11 December 2021
  - Biodiversity Presentation - 11 December 2021
  - Fire Presentation - 11 December 2021
  - Health Wellbeing Presentation - 11 December 2021
  - History and Cultural Heritage Presentation - 11 December 2021
  - Facilities Presentation - 11 December 2021
  - Safety Presentation - 11 December 2021
  - Comms Presentation - 11 December 2021
  - Burning Questions - 11 December 2021
  - Phase 1 Report: Summary of Stakeholders Issues, Comments and Opportunities
  - Phase 1 Report: Detailed Stakeholder Comments Received
  - TCMF Facilitators Presentation - 05 August 2021
  - Recording of Information Meeting on 05 August 2021
  - TCMF Facilitators Presentation - 25 May 2021
  - TCMF review meeting - Park Managers presentation - 25 May 2021
  - TCMF Facilitators Presentation - 03 June 2021
  - Park Manager's presentation - 03 June 2021



### 3. Chairperson's report



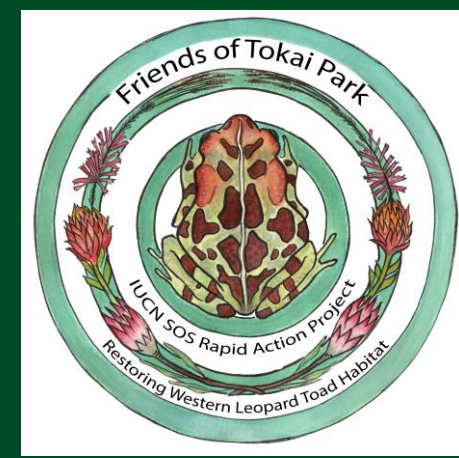
**FRIENDS OF  
TOKAI PARK**

Any questions?

Accepted?

Proposer:

Secunder:



# IUCN SOS Rapid Action Project

## Restoring Western Leopard Toad Habitat at Tokai

Alanna Rebelo • Leila Mitrani • Tony Rebelo  
FOTP.SOS@gmail.com



**FRIENDS OF  
TOKAI PARK**



**FRIENDS OF  
TOKAI PARK**



# Who are we?

## Project Team:

- FOTP Signatory and Chair: Prof Tony Rebelo
- FOTP Lead: Dr Alanna Rebelo
- Project Manager: Leila Mitrani

## Partners:

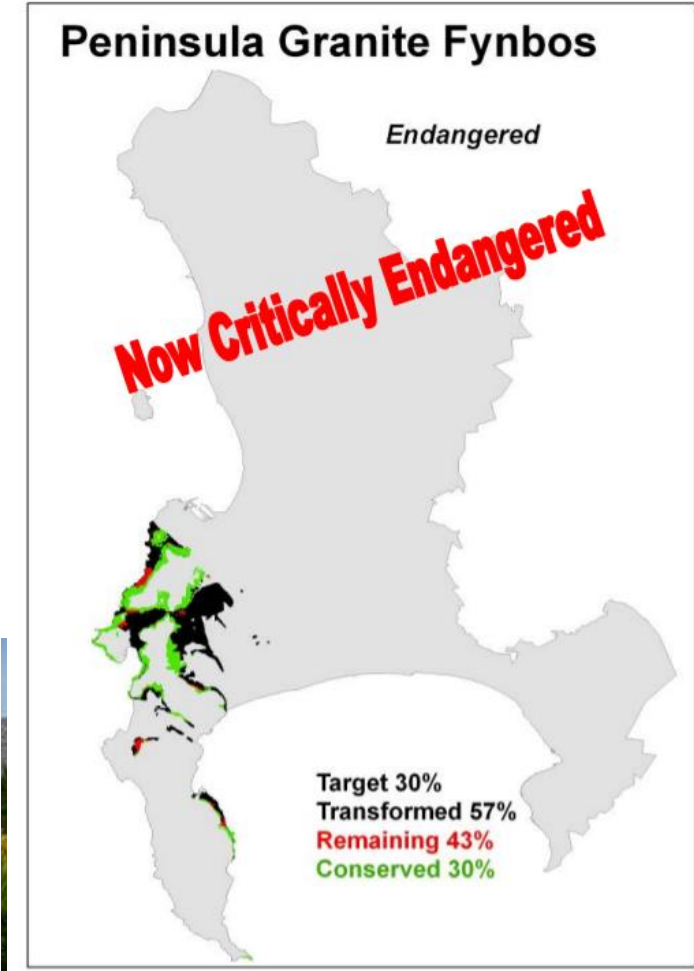
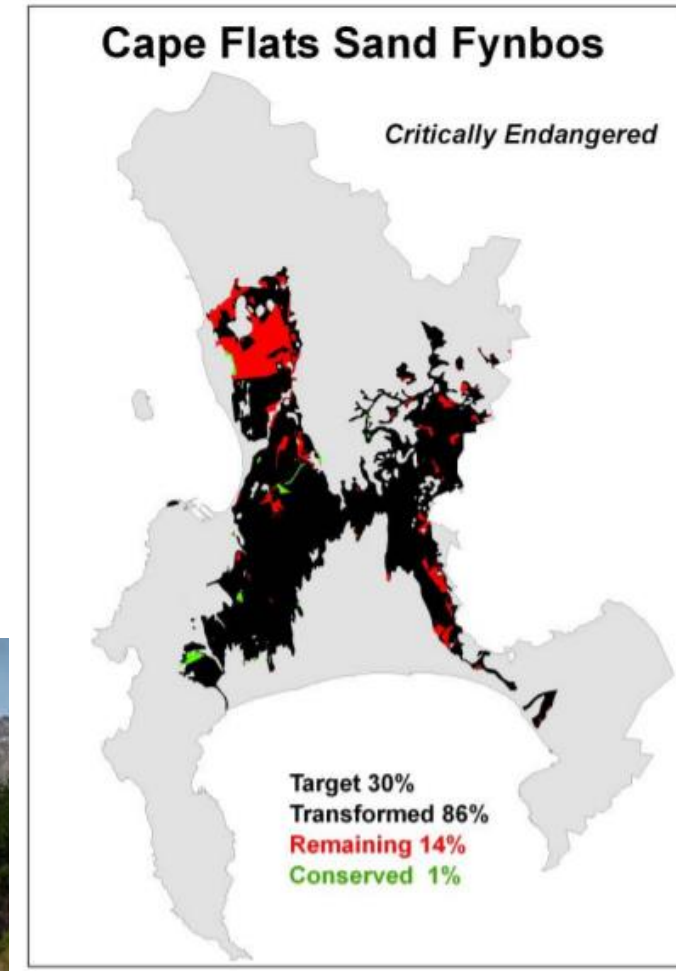
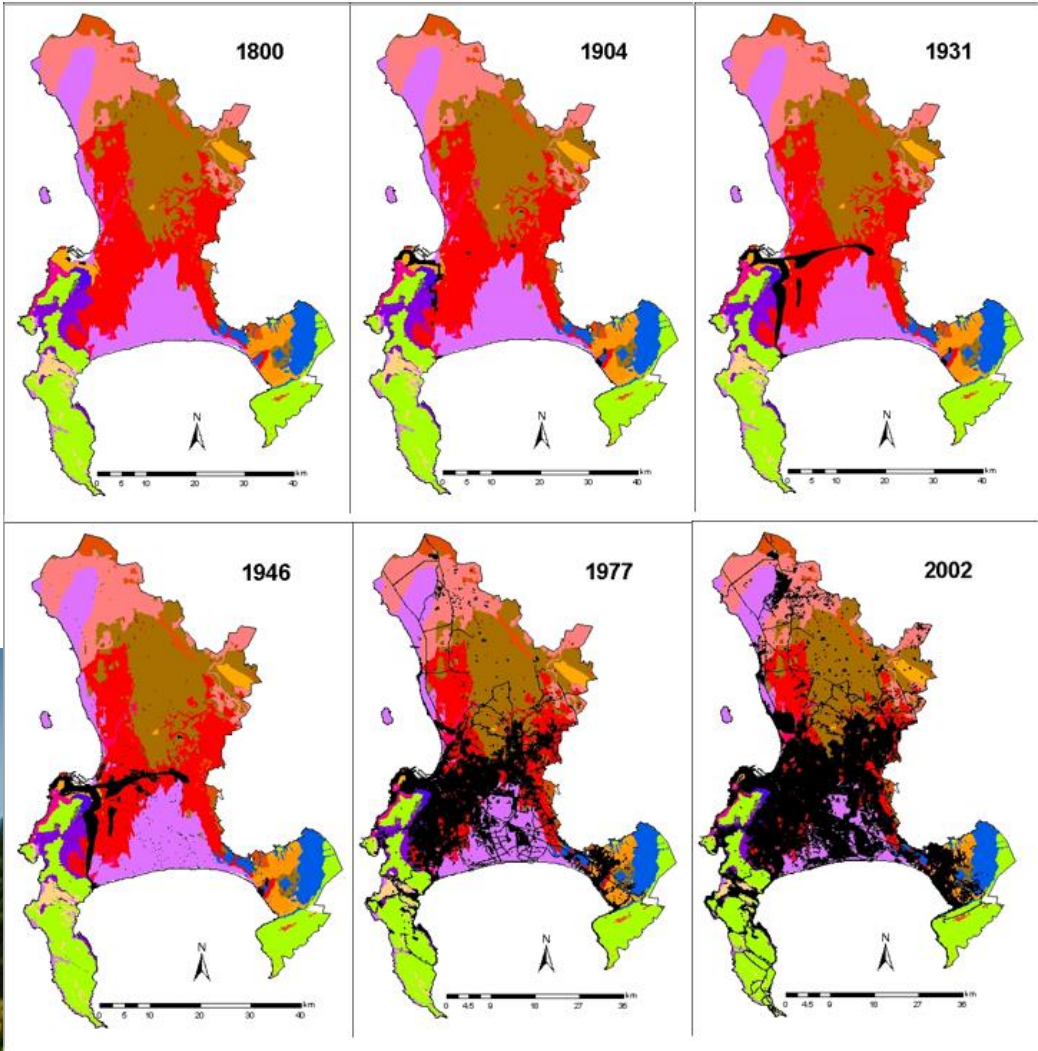
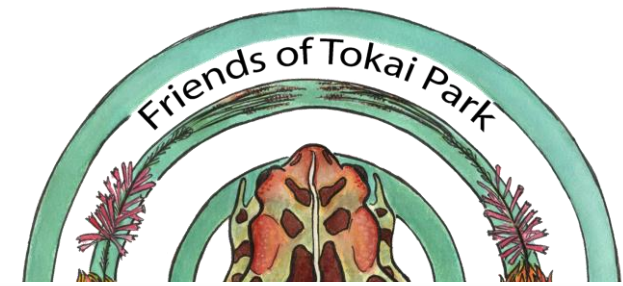
- SANParks



**FRIENDS OF  
TOKAI PARK**



# Why is Tokai Park important?



# Project Introduction

- Fragmented habitat
- COVID-19 pandemic compromised restoration efforts
- Fynbos at Tokai: crucial feeding and breeding habitat
- Restoration restarting, however need for follow-up efforts
- Critical moment for rapid action





# Project Aims

- Alien tree clearing/follow-up
- Active restoration (propagation & revegetation)
- Graduate intern learning experience



- Our 12 talented graduates began their internship on March 1st



- 3-day training program from alien ID to and a first aid course.



A young woman with long blonde hair, wearing a dark blue t-shirt and black leggings, standing on the far left of the group.

A young man with a beard, wearing a grey t-shirt and dark shorts, holding a wide-brimmed hat.

A man wearing a grey t-shirt with the text "Reptile Divers African Savannah" and teal pants.

A man wearing a dark blue jacket and blue pants, standing in the center of the group.

A woman wearing a dark blue jacket and dark pants, standing in the center of the group.

A woman wearing a blue jacket and dark pants, holding a water bottle.

A woman wearing a teal jacket and khaki pants, standing in the center of the group.

A woman wearing a teal jacket and blue pants, holding a camera up to take a photo.

A woman wearing a red jacket and dark pants, standing on the far right of the group.



High Angle Training Centre



- Faerie Wetland



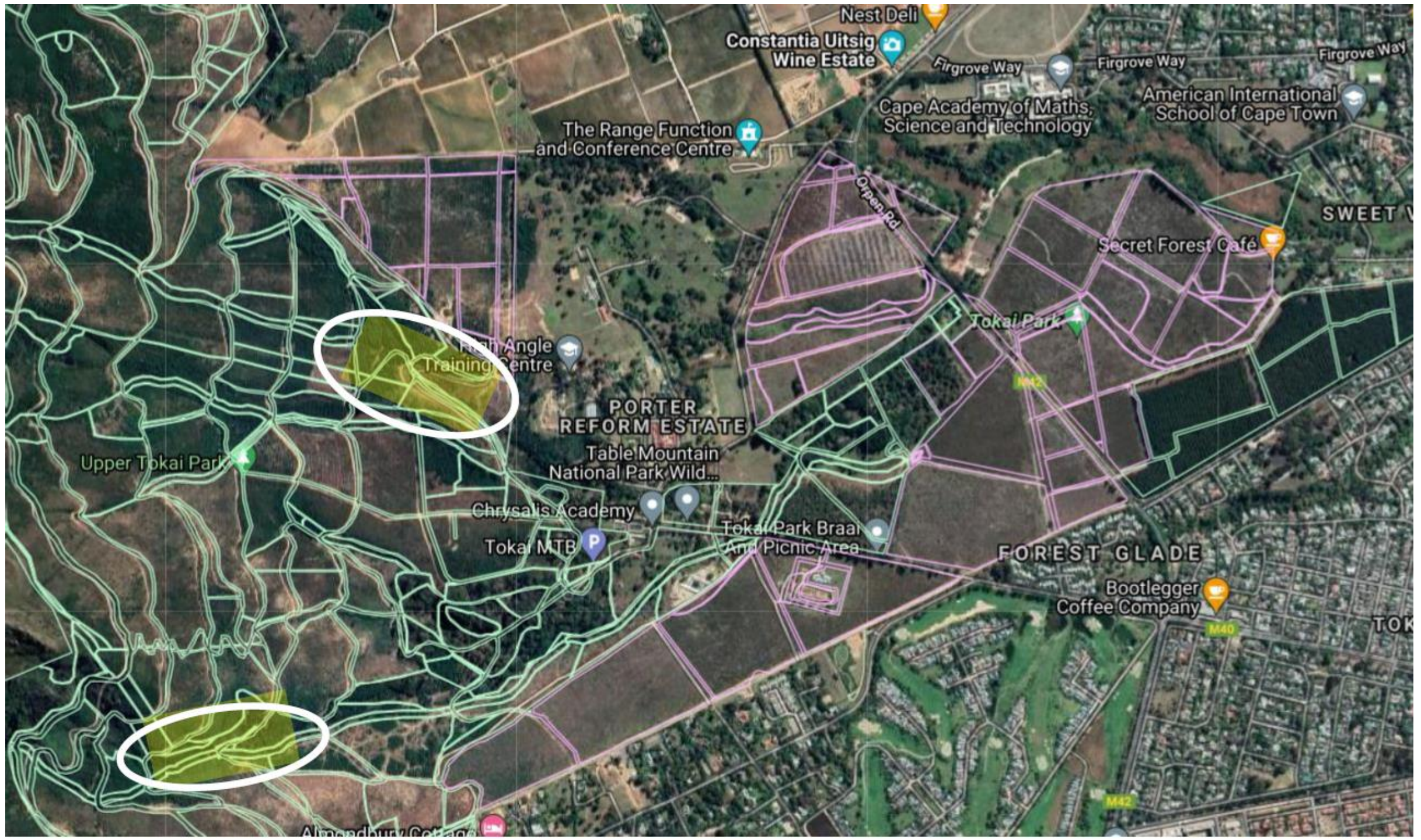
From  
this.....

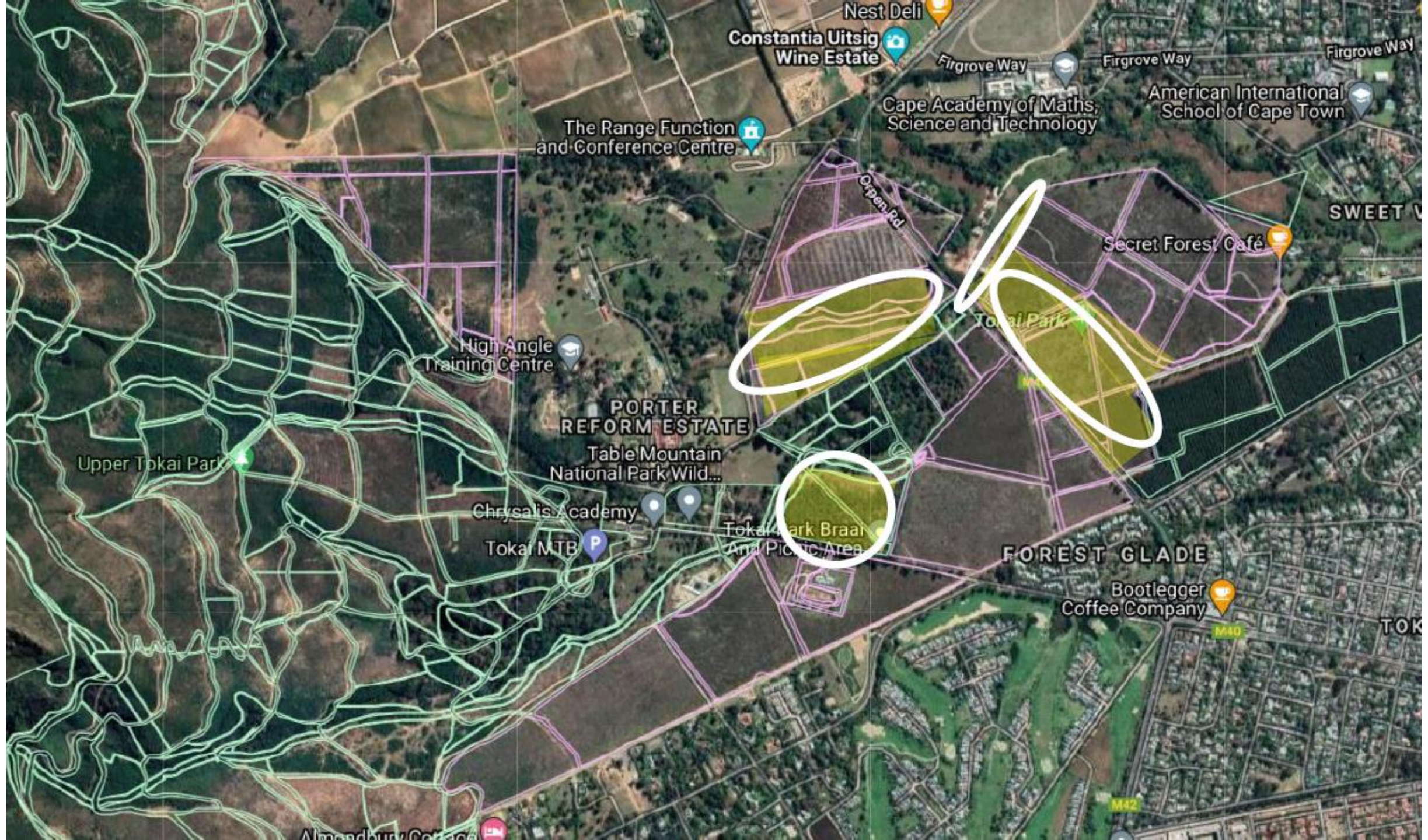


...to  
this!









## 4. Treasurer's report



**FRIENDS OF  
TOKAI PARK**



Jay Cowen

# 4. Treasurer's report



**FRIENDS OF  
TOKAI PARK**

## FRIENDS OF TOKAI PARK

### CASH FLOW FOR YEAR : 1st March 2021- - 28th February 2022

**Funds brought forward from prior year end 28<sup>th</sup> Feb '21 : R 21 102**

#### INCOME :

UICN Grant	841 740
WESSA donation	10 000
Park projects	2 700
Snapscan	193
CTEET grant (balance)	1 245
Interest	151 .....856 029

**FUNDS CARRIED FORWARD = R 716 733**

#### EXPENDITURE:

UICN project drawdown	145 521
Izele contract expenses	13 587
Bank charges	609
Hacking expenses	663
Lamination for noticeboard	18 .....(160 398)

Funds at Standard Bank : R716 737

Cash float - Jay \_\_\_\_\_(4)

**Total funds held = R 716 733**  
**at year end**

**NET INCOME FOR PERIOD = 695 631**

Thank you for those  
who generously  
donated to us in 2021!



## 4. Treasurer's report



**FRIENDS OF  
TOKAI PARK**

Any questions?

Accepted?

Proposer:

Secunder:



# 5. Election of office bearers



**FRIENDS OF  
TOKAI PARK**

Current



## Our Team

Meet our committee



Dr Tony Rebelo  
Chairperson



Dr Alanna Rebelo  
Secretary



Jeremy Gilmore  
Committee Member - Youth



Jay Cowen  
Treasurer



Mike Golby  
Committee Member



Vard Aman  
Committee Member

We are looking for more team members to join our committee! If you have a passion for lowland Fynbos conservation in general, and Tokai in particular, please contact us.

## 5. Election of office bearers



**FRIENDS OF  
TOKAI PARK**

Outgoing

None.

## 5. Election of office bearers



**FRIENDS OF  
TOKAI PARK**

### Incoming

We are delighted to welcome **Marna Herbst** as a new proposed member of our committee



**Accepted**

Proposer:

Secunder:

## 6. Matters Arising



**FRIENDS OF  
TOKAI PARK**

Are there any matters that participants would like to raise?

# 7. Save the date: upcoming FOTP events



**FRIENDS OF  
TOKAI PARK**

We have some exciting upcoming events: **Hacks**



About Us ▼ **Events** ▼ Media ▼

Events for Apr

EVENTS IN 4-2021    SEARCH Keyword    **FIND EVENTS**    VIEW AS Month ▼

MON	TUE	WED	THU	FRI	SAT	SUN
28 Arboretum Group	29 Lower Tokai Tuesday Alien Hack	30	31 Friends of Tokai Park AGM	1 Arboretum Group	2	3
4 Arboretum Group	5 Lower Tokai Tuesday Alien Hack	6	7	8 Arboretum Group	9	10
11 Arboretum Group	12	13	14	15 Arboretum Group	16	17
18 Arboretum Group	19 Lower Tokai Tuesday Alien Hack	20	21	22 Arboretum Group	23	24
25 Arboretum Group	26	27	28	29 Arboretum Group	30	1

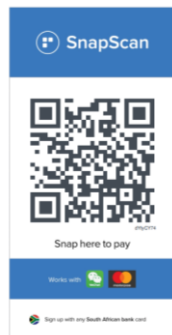
# Donations



**FRIENDS OF  
TOKAI PARK**

Do you like what you see?

Donate to our conservation efforts with one snap!



## BANK DETAILS

Friends of Tokai Park  
Standard Bank  
Blue Route  
Savings Account  
27 629 2669

WESSA Affiliation: MB1240127  
PBO Tax Exemption #: 930066728



dYlyCY74

PBO Exemption Reference Number: 930066728



# Part 2: Guest Talk

---



FRIENDS OF  
TOKAI PARK

## 9. Guest Talk & Questions



**FRIENDS OF  
TOKAI PARK**



Dr Anandi Bierman is a Postdoctoral Fellow in the Conservation Ecology and Entomology Department at Stellenbosch University studying landscape genomics of the polyphagous shot hole borer.

FOTP AGM 2022



Dr Anandi Bierman will present on the polyphagous shot hole borer. Image [credit](#).



# 10. Thank you and closing



**FRIENDS OF  
TOKAI PARK**

## Three reasons to support the Friends of Tokai Park

1. Tokai Park has exceptional biodiversity -over 450 indigenous plant species alone
2. Some of these species' continued existence depends on Tokai Park
3. Your money goes directly to conservation efforts (no one draws a salary)

Donate and make a difference to halting biodiversity extinctions in 2022 in one of the world's most biodiverse cities.

Donate to our conservation efforts with one snap!

### BANK DETAILS

Friends of Tokai Park  
Standard Bank  
Blue Route  
Savings Account  
27 629 2669



WESSA Affiliation: MB1240127  
PBO Tax Exemption #: 930066728



dYlyCY74

